

QV3

CERAMIC PANELS

K20 OMEGA-S

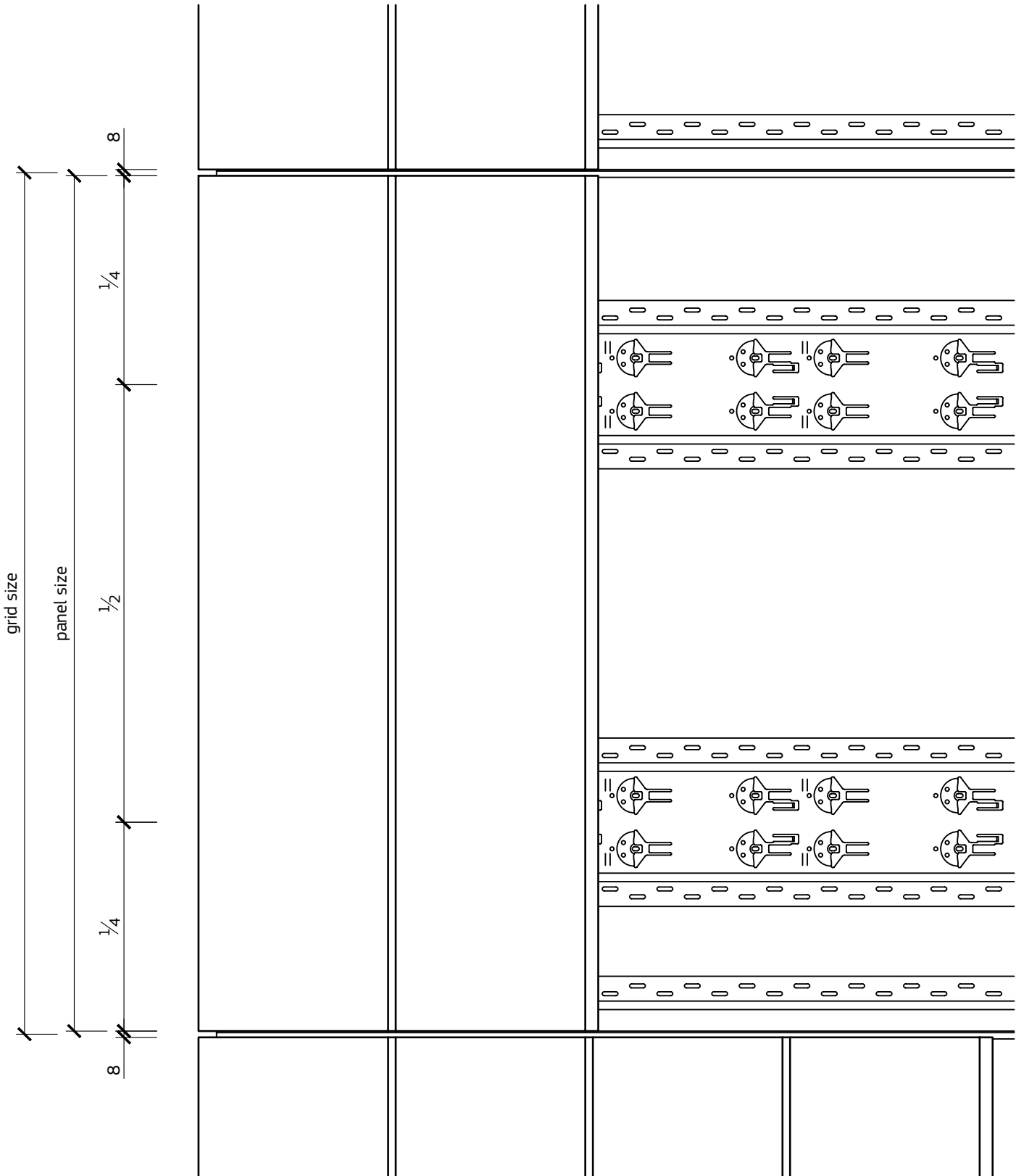
RAINSCREEN

SYSTEM

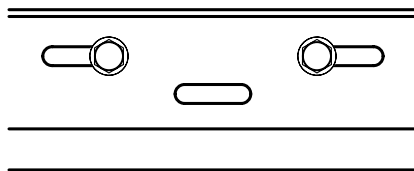
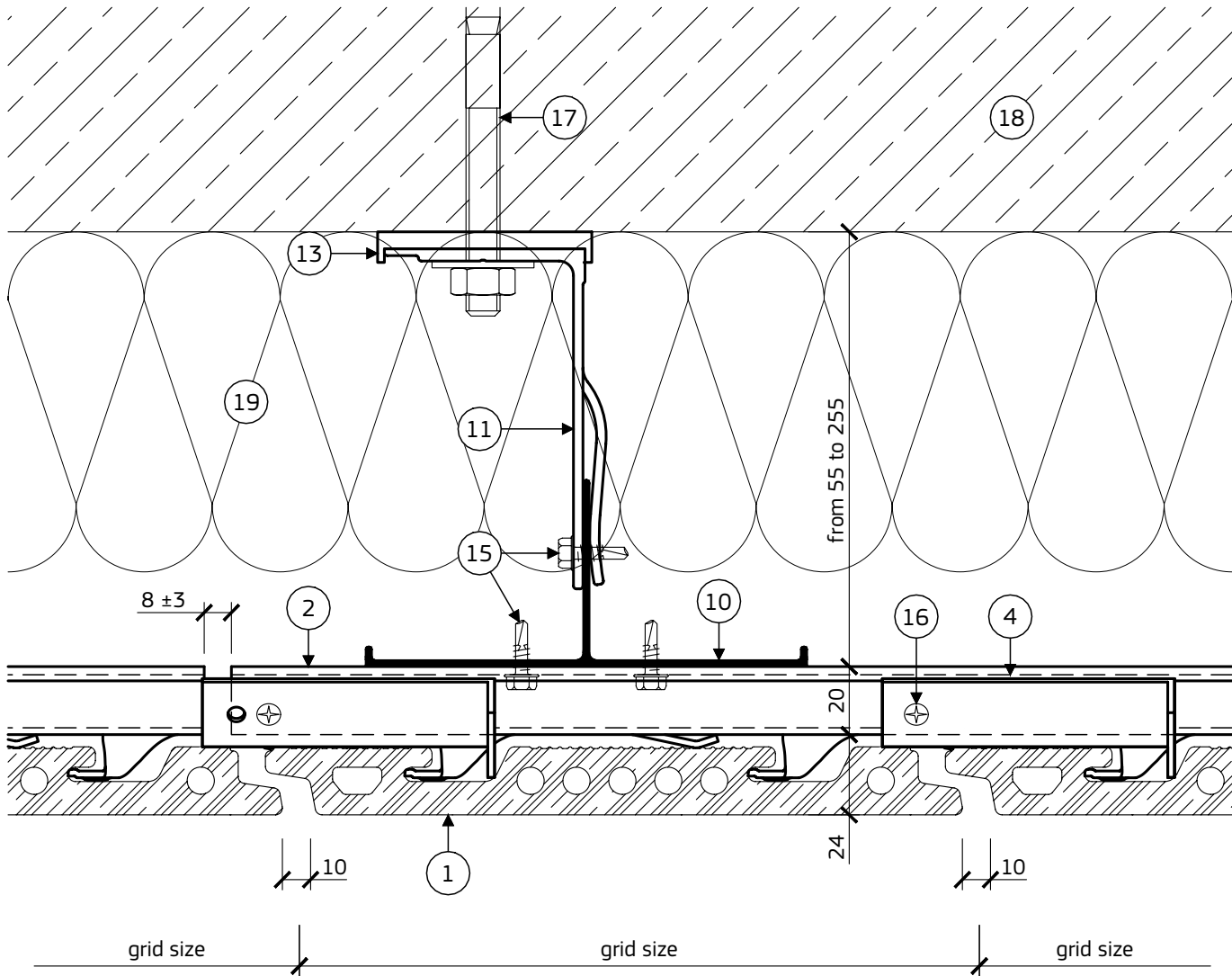
LEGEND

- ① CERAMIC PANEL AGROB BUCHTAL KeraTwin K20
- ② F-627Q OMEGA RAIL, BRIGHT *art.No 03.627.xx.XXX*
- ③ F-710Q OMEGA-S SUPPORTING PROFILE, PAINTED *art.No 03.710.xxx*
- ④ F-711Q POSITION SECURING BRACKET *art.No 03.711*
- ⑤ F-688Q JOINT PROFILE *art.No 03.688.xxx*
- ⑥ F-689 HOLDING CLIP FOR JOINT PROFILE *art.No 689*
- ⑦ F-650Q SQUARE RAIL, EXTERNAL ANGLE *art.No 03.650.xx.XXXP*
- ⑧ F-652Q SWORD RAIL, EXTERNAL ANGLE *art.No 03.652.xx.XXXP*
- ⑨ F-654Q NEGATIVE RAIL, EXTERNAL ANGLE *art.No 03.654.xx.XXXP*
- ⑩ PROFILE T130x55x2 *art.No 01.2.130552.xxx*
- ⑪ WALL BRACKET QVB 100/160, FIXED POINT *art.No 02.100.160.10*
- ⑫ WALL BRACKET QVB 100/70, SLIDING POINT *art.No 02.100.70.10*
- ⑬ THERMO-PAD 160x59 *art.No 05.59.160*
- ⑭ THERMO-PAD 70x59 *art.No 05.59.70*
- ⑮ SELF-DRILLING SCREW Ø4.8x16 mm, A2
- ⑯ SELF-DRILLING SCREW Ø4.8x16 mm, Pan head, A2
- ⑰ FASTENER
- ⑱ CONCRETE / MASONRY WALL
- ⑲ INSULATION
- ⑳ WINDOW SYSTEM
- ㉑ METAL TRIM / FLASHING / COPING
- ㉒ PERFORATED METAL TRIM

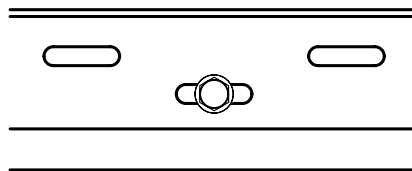
GENERAL INSTALLATION DIAGRAM



1.1 PLAN DETAIL



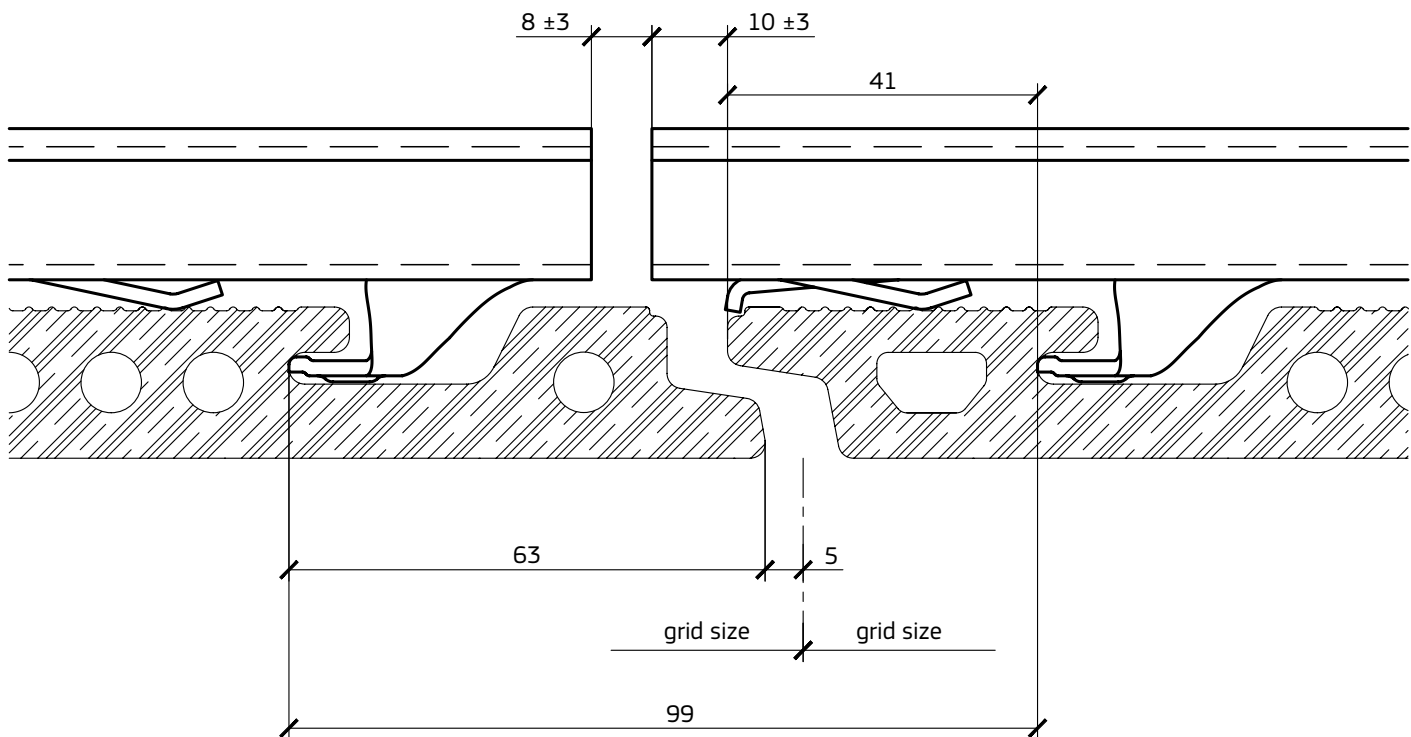
FIXED POINT
(one per rail)



SLIDING POINT

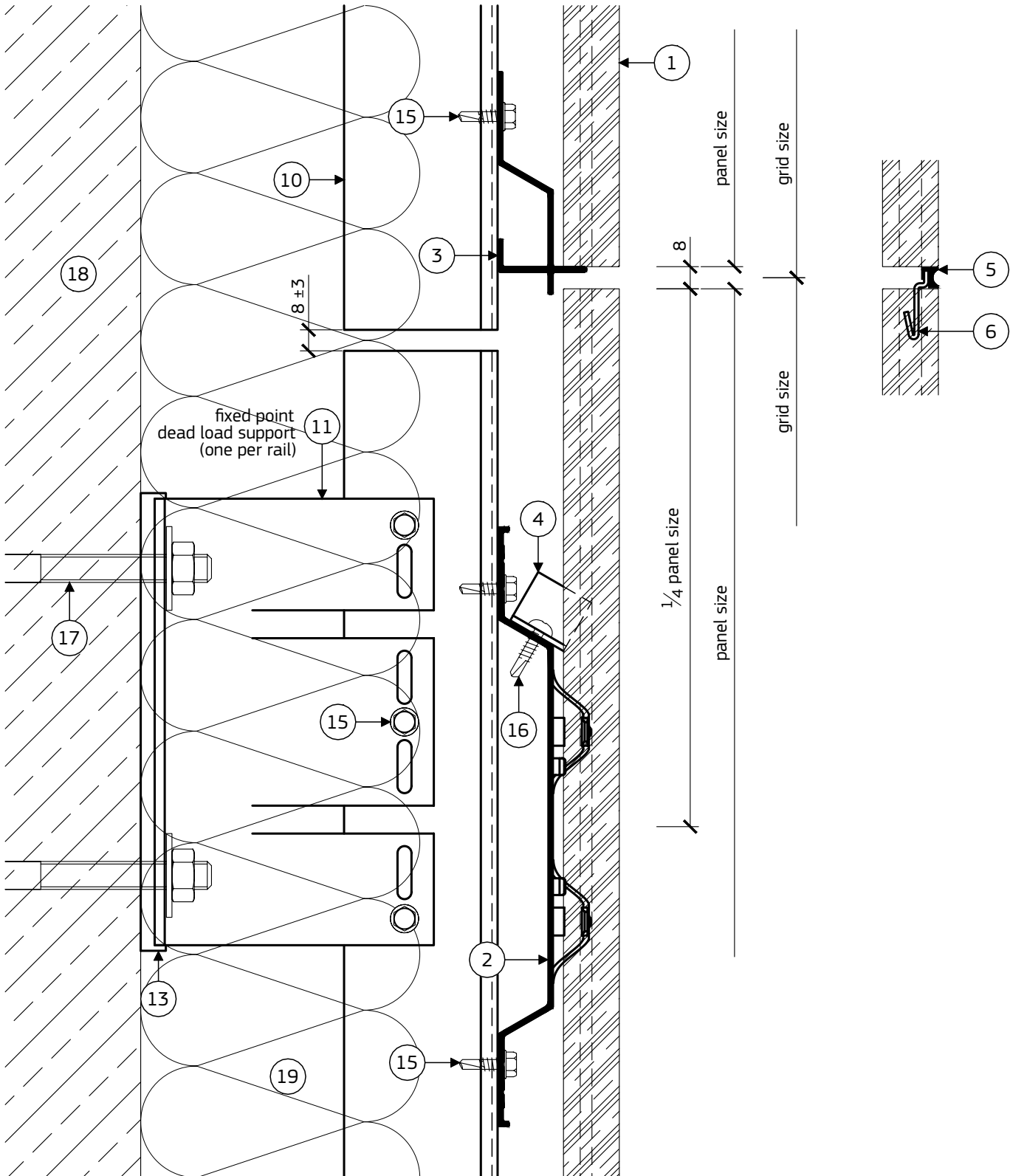
The supporting rail and F-627Q omega rails should be fixed at mid-length (fixed point) and allowed to expand toward the ends using slotted holes (sliding points), considering the fastener to fall at the center of the hole.

1.2 PLAN DETAIL - VERTICAL JOINT



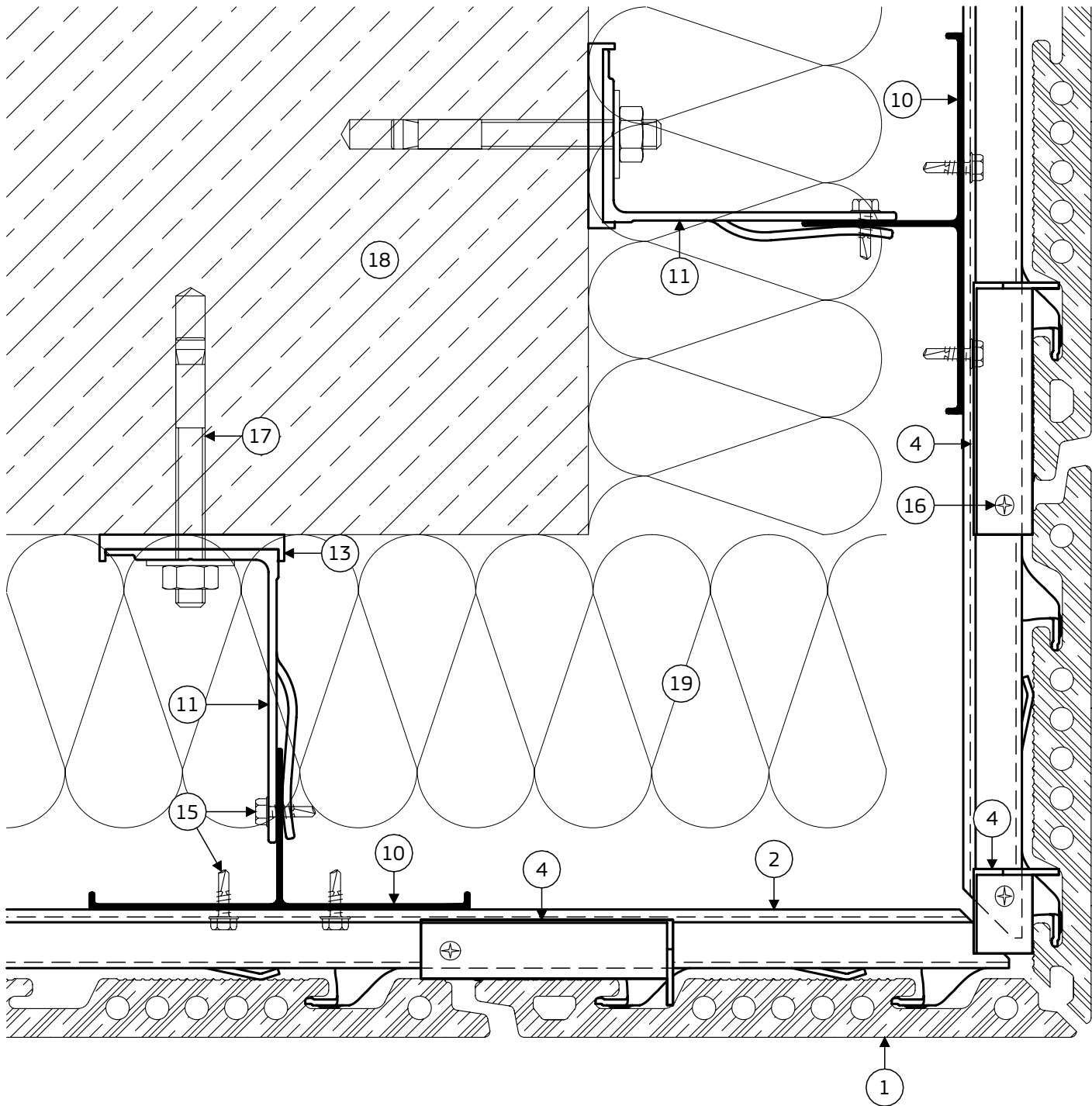
During the installation as a reference point must be used the upper edge of the hooks.

2.1 SECTION DETAIL

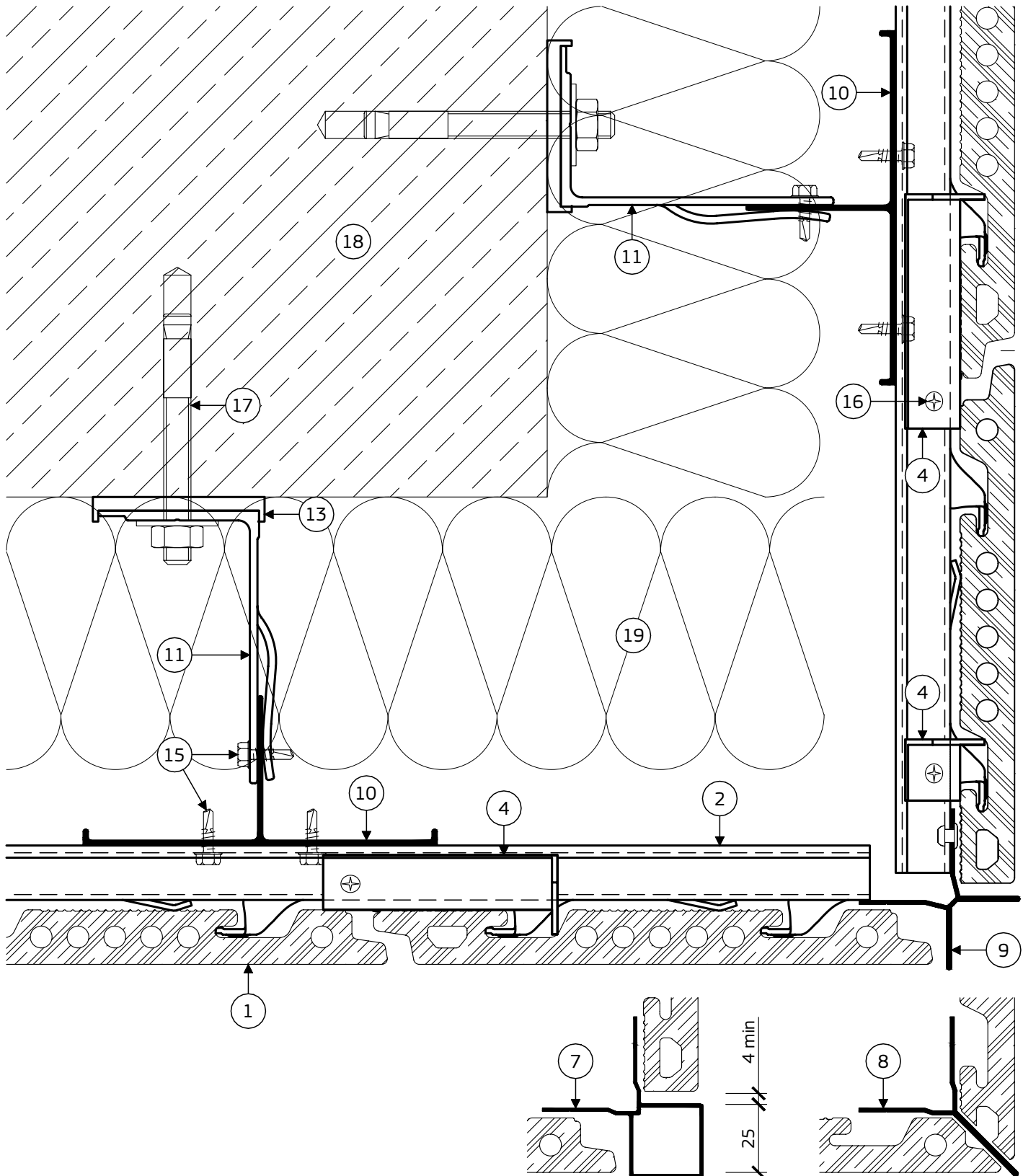


The profiles should be fixed using normal clearance holes (fixed point) and allowed to expand using slotted holes (sliding points), considering the fastener to fall at the center of the hole.

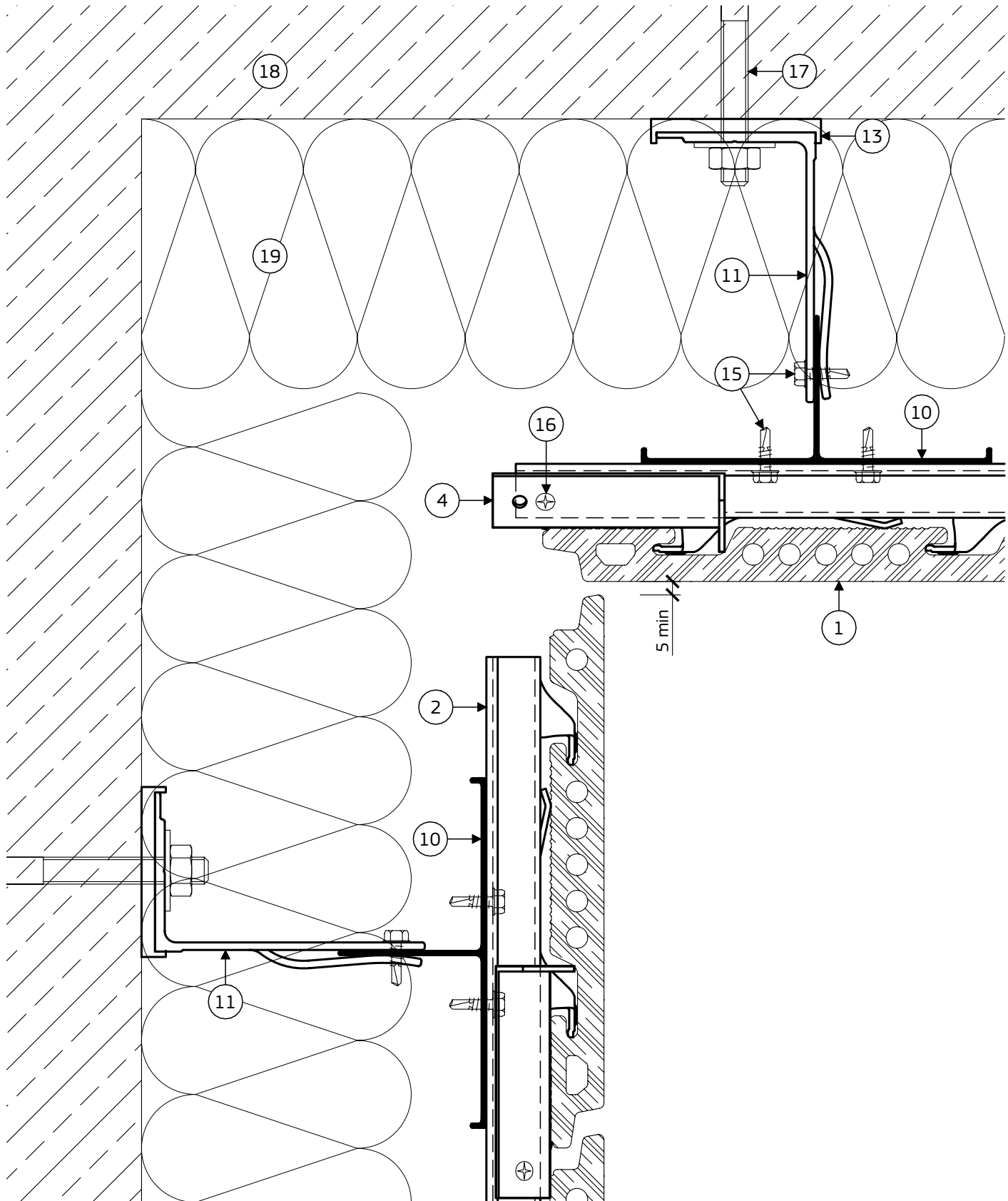
3.1 PLAN DETAIL - OUTSIDE CORNER



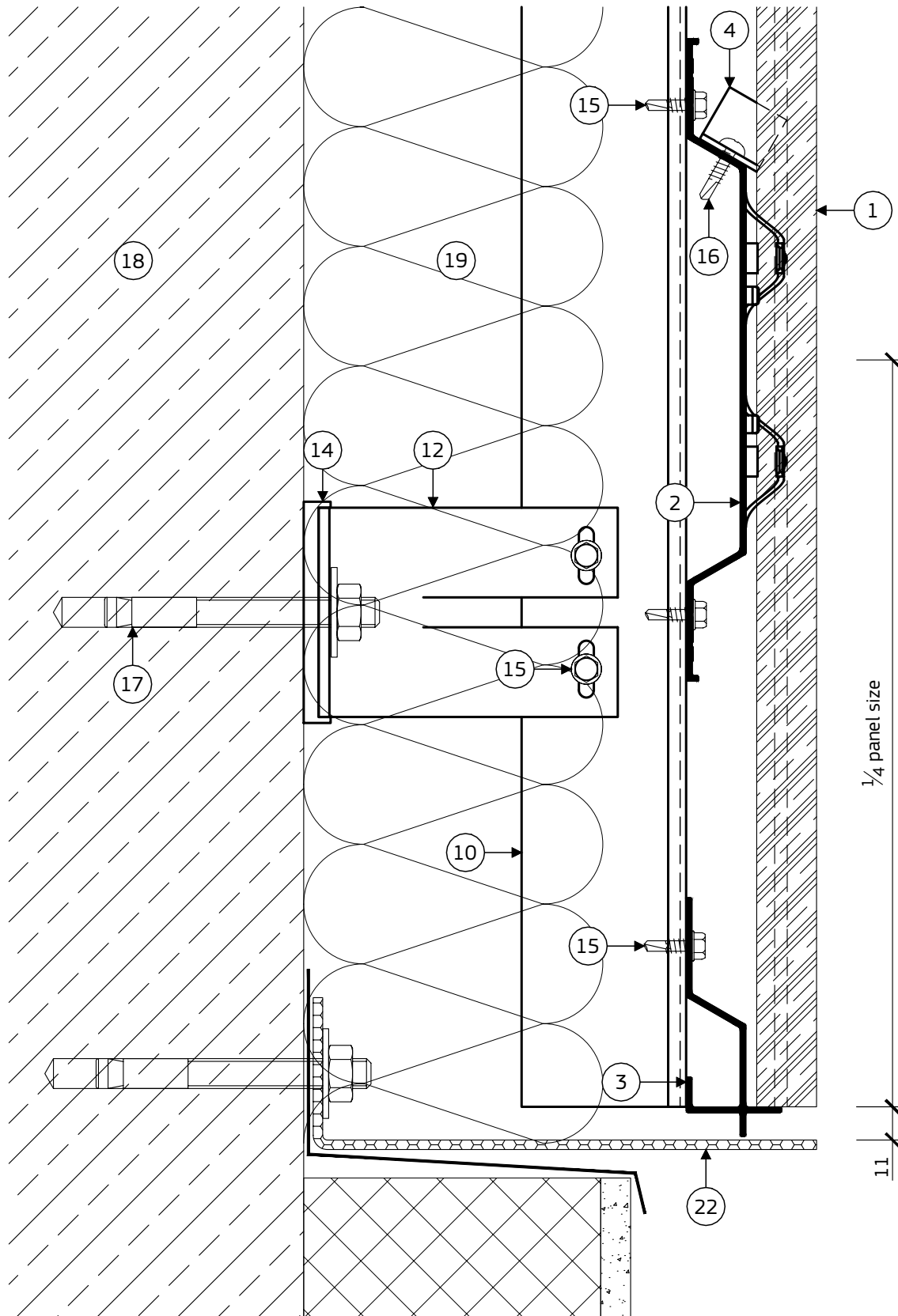
3.2 PLAN DETAIL - OUTSIDE CORNER



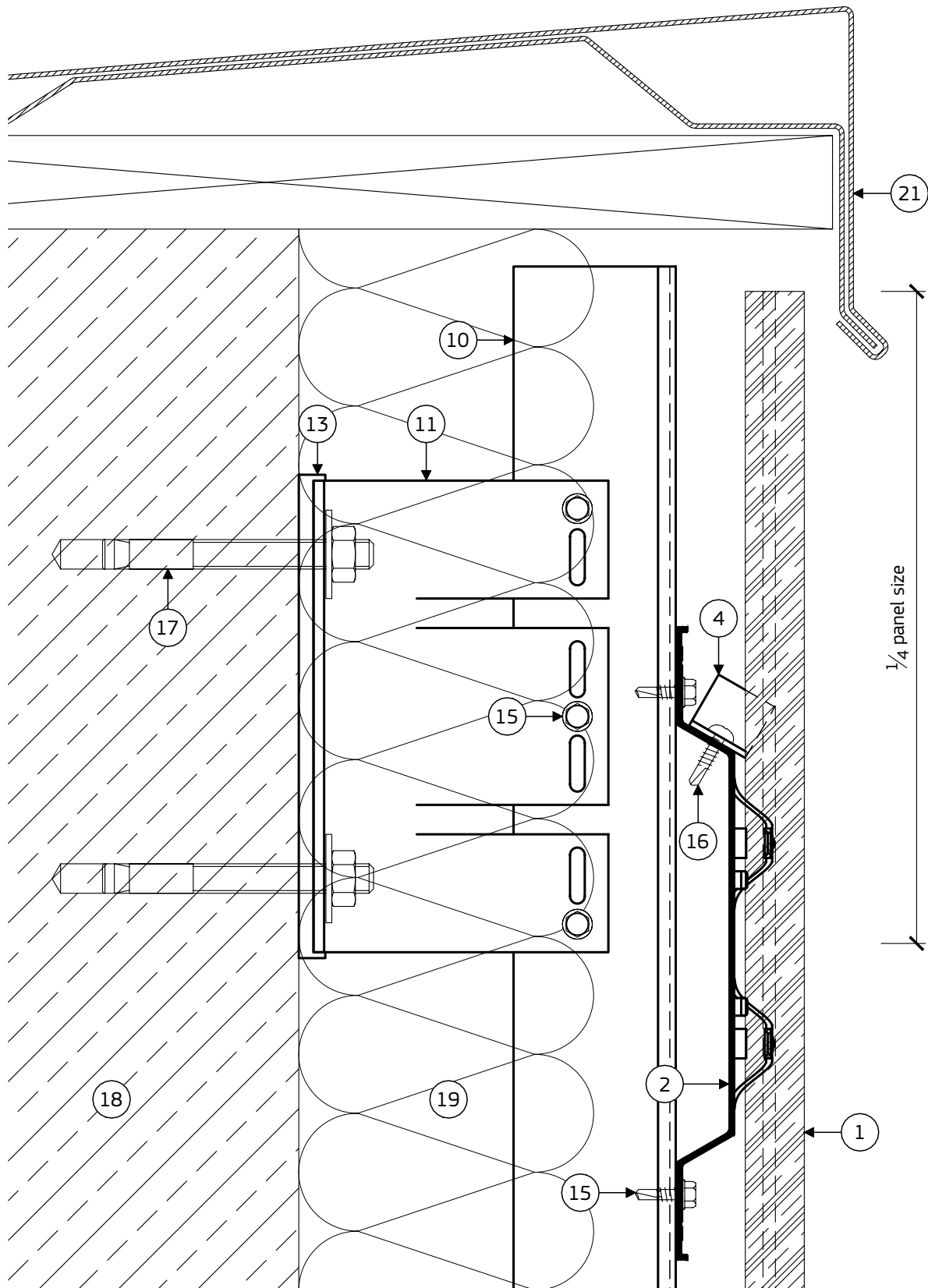
4.1 PLAN DETAIL - INSIDE CORNER



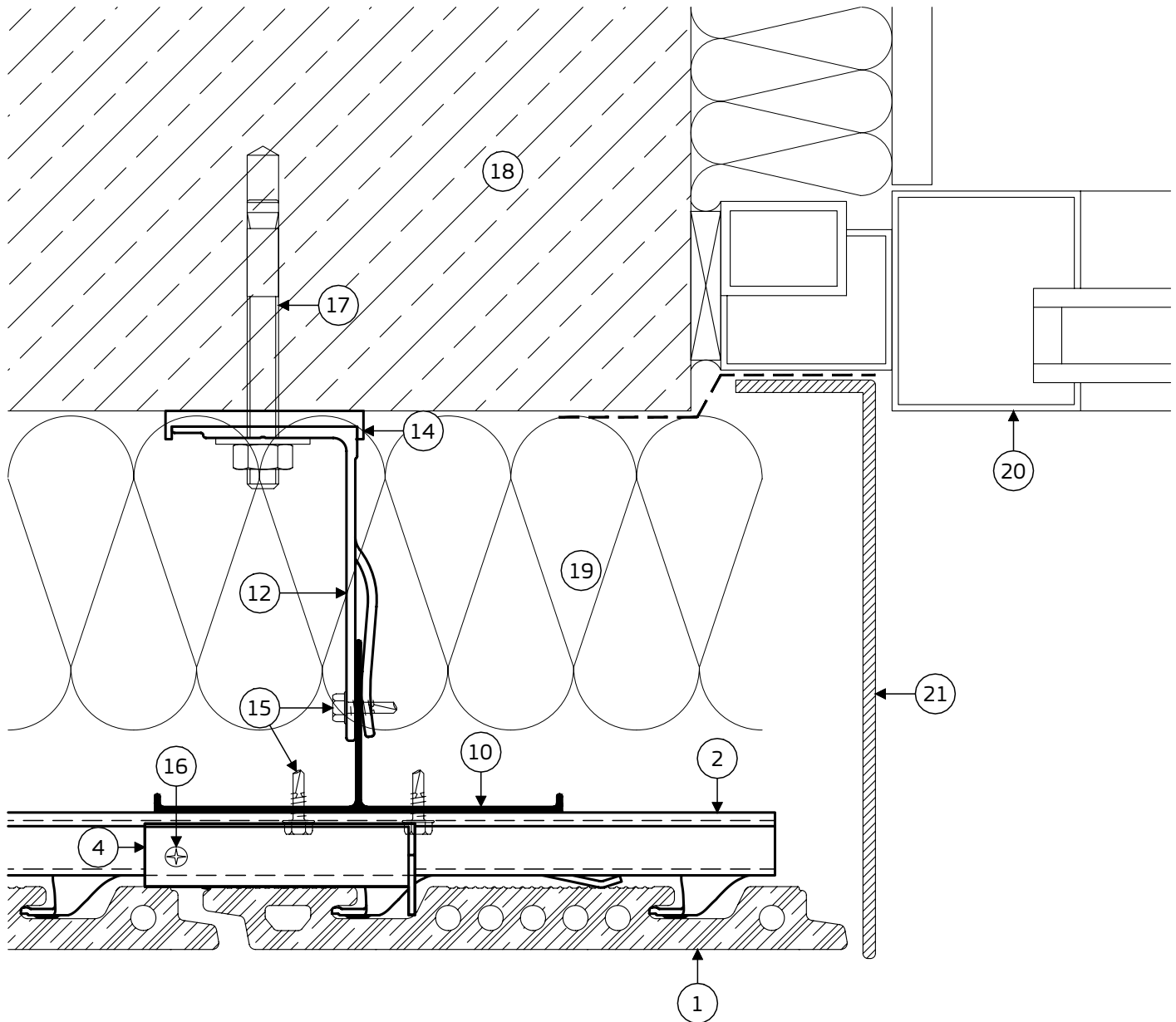
5.1 SECTION DETAIL - BASE



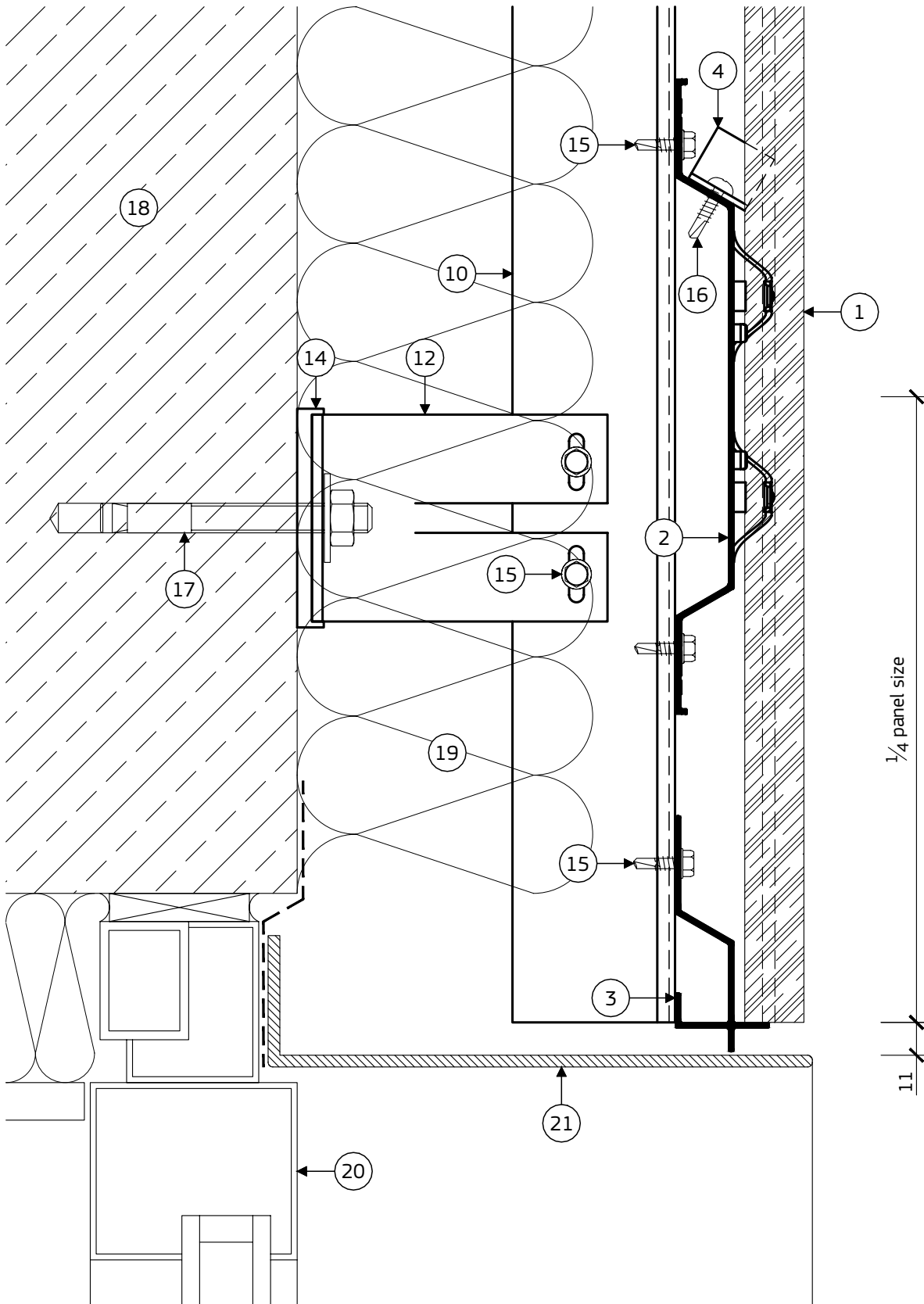
6.1 SECTION DETAIL - PARAPET



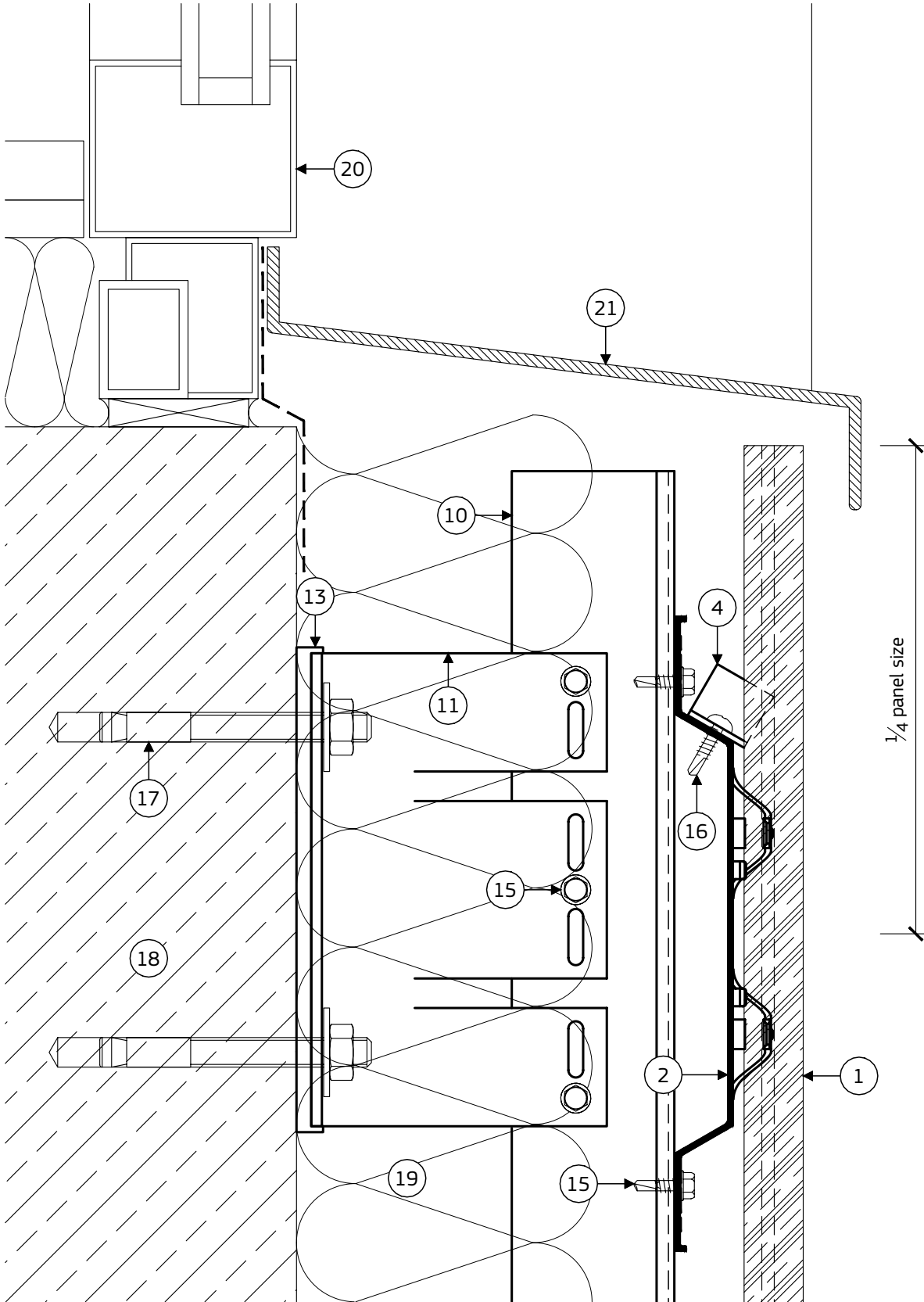
7.1 PLAN DETAIL - WINDOW JAMB



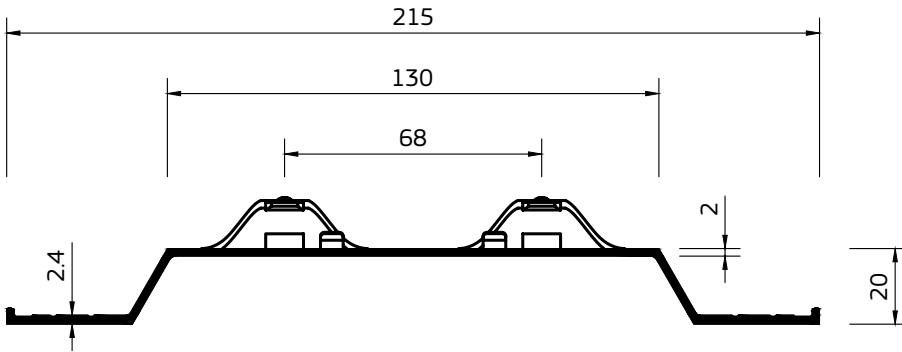
8.1 SECTION DETAIL - WINDOW HEAD



9.1 SECTION DETAIL - WINDOW SILL



SYSTEM COMPONENTS



Available for panel grid of 200 mm up to 600 mm.
Non-standard and mixed grids on request.

Refer to table T.3 for standard profile lengths.
Other lengths on request.

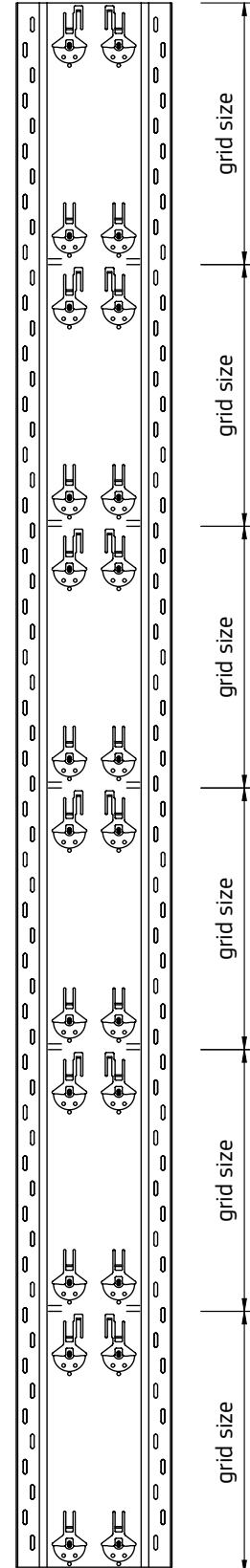
Material: AW 6063 T5

Article No	Description	Finish	Weight
03.627.xx.XXX	F-627Q Omega rail	bright	1356 g/m
03.624.xx.XXX	F-624Q Omega rail	painted black	

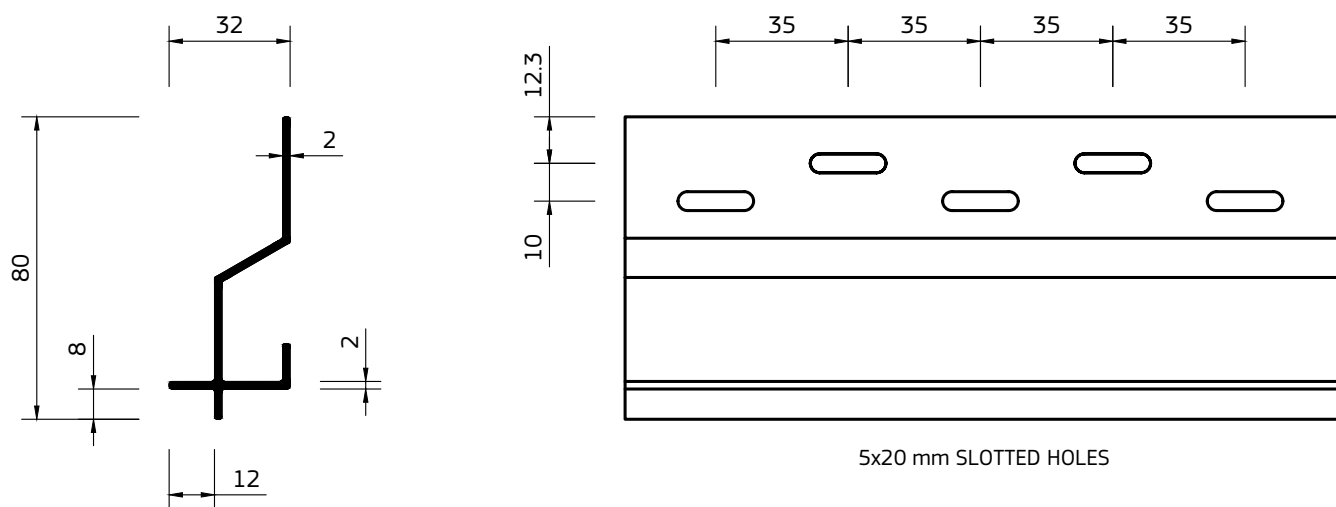
xx - grid size, XXX - rail length

Other colors on request.

5x20 mm slotted holes at 35 mm O.C.



SYSTEM COMPONENTS



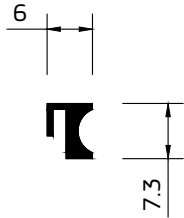
Material: AW 6063 T6

Article No	Description	Finish	Weight
03.710.xxx	F-710Q Omega-S supporting profile	painted black	702 g/m

xxx - rail length

Other colors on request.

SYSTEM COMPONENTS



Material: AW 6063 T66

Article No	Description	Finish	Weight
03.688.xxx	F-688Q Joint profile	painted black	61 g/m

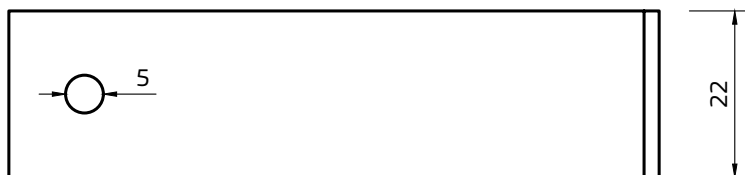
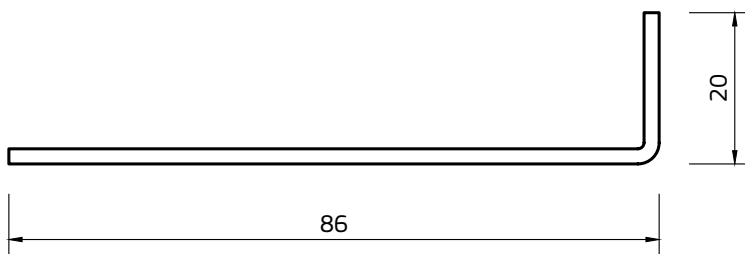
xxx - rail length

Other colors on request.



Material: AW 5005 A

Article No	Description	Finish	Weight
689	F-689 Holding clip for joint profile	unpainted	2 g/pc



Material: AW 5754 H22

Article No	Description	Finish	Weight
03.711	F-711Q Position securing bracket	unpainted	14 g/pc